



IMPORTANT ASSEMBLY INFORMATION

Always install the fabric graphic starting at the bottom and working up towards the top. The fabric graphic is tapered to fit and will be damaged if pulled down from the top of the counter frame towards the bottom. Please see STEP 05 .

GENERAL INFORMATION

Thank you for choosing ASAP!

For additional information please feel free to call us at 877-977-5537 or visit our website at www.asapcanopy.com

Our office hours are weekdays 9:00 AM to 6:00 PM EST. If you need assistance over the weekend, please email [support@ info@asapcanopy.com](mailto:support@info@asapcanopy.com) and one of our staff members will respond as soon as possible.

TOOLS

No tools required

PARTS

(A) hard shipping case lid



(B) hard shipping case base



(C) counter top



(D) 4 vertical support poles



(E) 1 fabric graphic



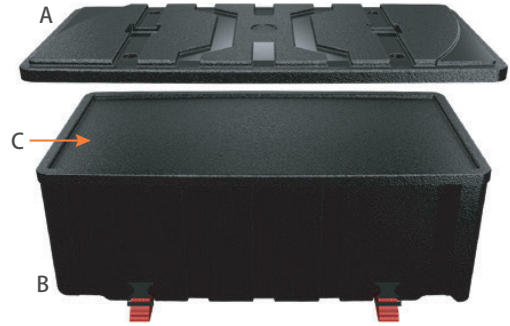
STEP 01

Put case flat on the floor and undo the two straps.



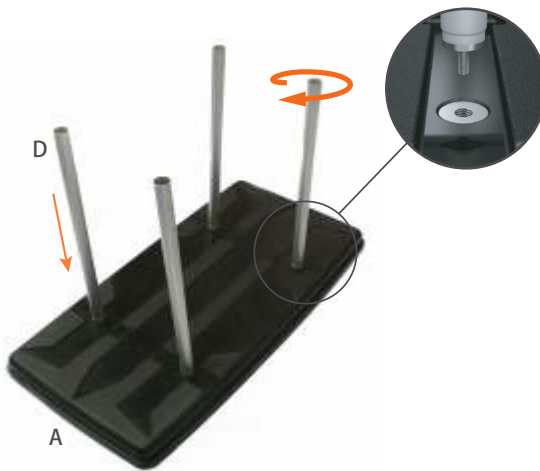
STEP 02

Lift the case lid (A) and remove the contents in the case.



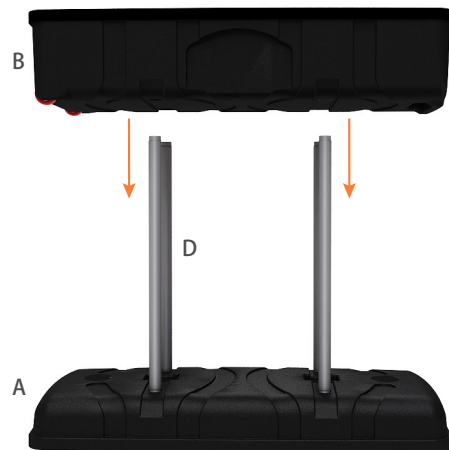
STEP 03

Put the case lid (A) on the floor first. Screw the support poles (D) into place.



STEP 04

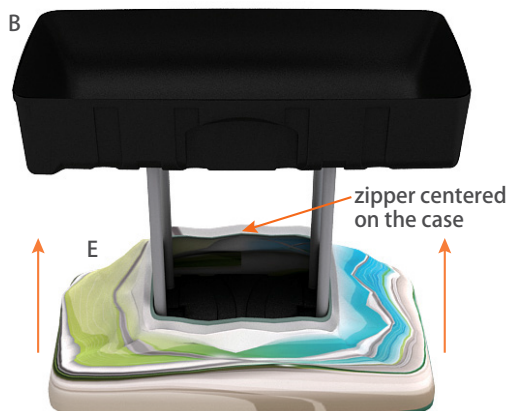
Lift the case base (B) and place on top of the support poles (D). Insert support poles (D) in the four holes in the case base (B).



STEP 05

Place the assembled counter frame in a clean area to install the fabric graphic (E). Start at the bottom of the counter frame (hard shipping case lid, A), and pull up towards the top of the counter frame (hard shipping case base, B). Ensure that the zipper is centered on the case.

WARNING: Attempting to pull the fabric graphic (E) down from the top of the counter frame (hard shipping case base, B) will damage the tapered fabric graphic.



STEP 06

Make sure that all wrinkles are out and the fabric graphic (E) looks straight.



STEP 07

Put the counter top (C) right on top and press down to secure.



STEP 08

Complete.



QUICK VIEW

Hardware configuration.



STORAGE

The zipper on the back is used to access storage space.

